

Modelo Plasma

SISTEMA DE CONTENEDORES DE ESTERILIZACIÓN

1/1

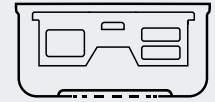
Completo



Tapa perforada



Color	Cod.
Gris	K6-120Z



Base perforada

Cod.	Dimensiones externas
	Dimensiones internas L x W x H
K6-100Z	600 x 272 x 96 mm 543 x 528 x 78 mm
K6-102Z	600 x 272 x 138 mm 543 x 258 x 121 mm

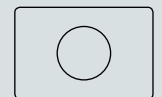


Base perforada



3/4

Tres cuartos



Tapa perforada



Cod.	Dimensiones externas Dimensiones internas L x W x H
K6-300Z	475 x 272 x 96 mm 422 x 258 x 78 mm
K6-302Z	475 x 272 x 138 mm 422 x 258 x 121 mm

Color	Cod.
Gris	K6-340Z

Modelo Plasma

SISTEMA DE CONTENEDORES DE ESTERILIZACIÓN



1/2

Medio



Tapa perforada



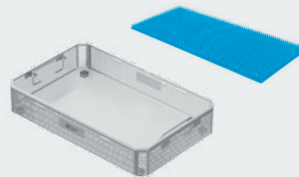
Color	Cod.
Gris	K6-630Z



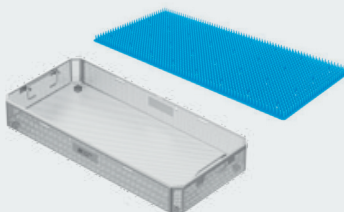
Base perforada

Cod.	Dimensiones externas Dimensiones internas L x W x H
K6-600Z	310 x 272 x 96 mm 253 x 528 x 78 mm
K6-602Z	310 x 272 x 138 mm 253 x 258 x 121 mm

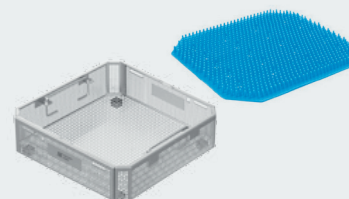
	Cod.	Dimensiones externas L x W x H
Canastilla	K3-741	540 x 253 x 60 mm
	K3-743	540 x 253 x 110 mm
Tapete	K2-528	475 x 230 mm



	Cod.	Dimensiones externas L x W x H
Canastilla	K3-753	244 x 253 x 60 mm
	K3-755	244 x 253 x 110 mm
Tapete	K2-527	230 x 220 mm



	Cod.	Dimensiones externas L x W x H
Canastilla	K3-749	405 x 253 x 60 mm
	K3-751	405 x 253 x 110 mm
Tapete	K2-524	380 x 230 mm



CANASTILLAS

TAPETES

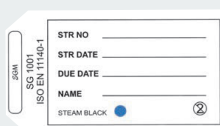


Soporte
Altura: 10 mm

CONSUMIBLES



Cod. K2-673Z 100 pzas.

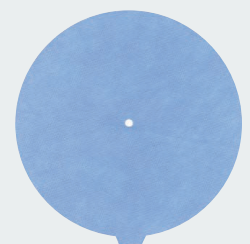


Cod. K2-672Z 100 pzas.



Cod. K2-663Z 100 pzas.

FILTRO



Cod.	Diametro	Pzas
K2-741Z	184 mm	100